

# LAW AND CRIMINOLOGY



ROYAL  
HOLLOWAY  
UNIVERSITY  
OF LONDON

Undergraduate Studies

# Welcome



The Department of Law and Criminology is a successful multi-disciplinary department offering a range of programmes including law, criminology, psychology, sociology, forensic psychology and social work. We are a diverse, dynamic and vibrant community with sound intellectual

and policy aims and outcomes. We place students at the heart of our focus helping them to reach their highest potential.

The unique strength of our community in this department and the School of Law and Social Sciences is that it brings together so many exceptionally talented people of different backgrounds, experiences, interests, methodologies, and perspectives in a subject mix which is stimulating and distinctive in legal and social science education.

Our department is built on strong traditions in law, criminology, psychology, sociology and social work. Our qualifying law courses, and combined honours courses offer a mix of opportunities within the broad framework of our key disciplines. We have outstanding national and international collaborative links in the world of law, criminal justice and forensics, and social work; with a real commitment to making a difference in society

## **Prof Konstantinos Alexandris Polomarkakis**

Head of Department of Law and Criminology



## Contact details

### Admissions enquiries

Dr Tim Sinnamon  
[tim.sinnamon@royalholloway.ac.uk](mailto:tim.sinnamon@royalholloway.ac.uk)

### General enquiries

[LSS-school@royalholloway.ac.uk](mailto:LSS-school@royalholloway.ac.uk)

### Connect with us



@RHUL\_Law  
@RHSocSci

[royalholloway.ac.uk/  
lawandcriminology](http://royalholloway.ac.uk/lawandcriminology)



**Learn from leading experts from within Law, Criminology, Psychology and Sociology**



**Wide choice of optional modules available in your 2nd and 3rd year**

# Studying in the department

We provide research focused, intellectually stimulating courses for students wishing to undertake study in law, criminology, sociology, social science and psychology.

Our internationally renowned academics are leaders in their fields and bring their research and practice into the lecture theatre, helping students gain current and relevant skills and knowledge.

We also have an internationally diverse and active student community allowing you to network with fellow students from all around the world.

During your time with us you will benefit from a dedicated support network, including a personal advisor and student peer guides and consultation and feedback hours.

## Careers prospects

Students from our department have an excellent record in securing employment. Employers are interested in both the skills you develop on your degree as well as the skills you develop through student life and you'll be able to build your employability skills through networking events and other activities and we will help you prepare for the world of work from day one.

## Campus environment

Whether you choose to live on campus or commute to university, we have a friendly community where you will be able to meet students and staff from different backgrounds.



# Choosing your degree

Our degree courses reflect the very latest developments in law, criminology, psychology, sociology and social policy. You will examine real-life situations and have the opportunity to undertake one of our unique industry placements. As you progress through your modules, you will become equipped with the knowledge, skills and experiences essential to advance your future career.

Our courses are designed to give you a solid foundation of knowledge in your first year and to expand on this in subsequent years. By the time you reach your second and third year you will have an excellent basis of knowledge and will be given the opportunity to dig deeper in to your own individual passions by choosing optional modules alongside your mandatory modules.

"I feel very lucky to have been taught by bright, passionate and experienced lecturers, who were always willing to help me and support my learning. Royal Holloway gave me the opportunity to really develop my academic and interpersonal skills in a very supportive environment. I took a role on the Law Society, mooted in the Supreme Court, competed in negotiations and client interview competitions and volunteered with the Citizens Advice Bureau, all of which provided a fantastic opportunity to push myself in different ways."

**Melissa** LLB Law Graduate



If you choose one of our Year in Industry options, you'll have the option to spend your third year on a placement, before returning to complete your studies in your fourth year. You're responsible for securing your placement but we work closely with the Careers Service to support you both before and while you are out on your placement year.

For details of current module options, accreditations and our entry requirements, please see our website.

## DEGREES

	UCAS Code	Year in Industry code
<b>LAW AS A MAJOR SUBJECT</b>		
LLB Law	M100	MM10
LLB Law (with Integrated Foundation Year)	M10F	N/A
LLB Law with Criminology	ML12	ML13
LLB Law with Sociology	ML23	ML33
LLB Law with International Relations	MF50	MF05
LLB Law with Modern Languages (French)	M1R1	N/A
LLB Law with Modern Languages (German)	M1R2	N/A
LLB Law with Modern Languages (Italian)	M1R3	N/A
LLB Law with Modern Languages (Spanish)	M1R4	N/A
LLB Law with Philosophy	M1V5	N/A
LLB Law with Politics	M1L2	M12L
<b>JOINT DEGREES</b>		
BSc Criminology and Sociology	LM39	LL33
BSc Social Science	L301	N/A
BSc Health and Social Care	L510	N/A
BSc Health and Social Care (with Integrated Foundation Year)	L51F	N/A
BSc Criminology & Psychology	CL83	LC38
BA Sociology & Philosophy	LV35	N/A
BA Philosophy and Law	VM51	N/A
BA Politics and Law	LM21	LM12



# Studying here

Studying in the Department of Law and Criminology within the School of Law and Social Sciences means that you will benefit from an interdisciplinary environment. Our research interests include issues associated with law, criminal justice, youth, health, land, company law, arbitration, multiculturalism and identity.

## Supportive learning

We have a strong culture of support for students. All students are allocated a personal advisor before arrival, who will provide academic advice and pastoral support throughout the entire degree programme.

## Facilities

We are based close to the beautiful and historic Founder's Building, which houses our Picture Gallery and chapel as well as a dining hall and accommodation for 500 students.

Directly across from the Founder's Building is the Emily Wilding Davison Building, completed in 2017 and home to our state-of-the-art library. It is situated a few seconds walk away from the Arts Building, home of the Department of Law & Criminology.



Student in our mock court room



Our state-of-the-art library,  
housed in the Davison Building.  
©Associated Architects Ben Mcfee

# Student life

## Volunteering

We offer several ways of gaining real-life work experience whilst studying. Our Legal Advice Centre provides free legal advice and information services on various areas of law to address legal needs in the community. Our student advisers are provided with an invaluable opportunity to see how the law works in practice, whilst being supervised by practising solicitors.

## Extra-curricular activities

A number of extra-curricular activities including mooting, interviewing, negotiation voice training and experience in our mock court room are on offer. These activities are designed to increase employability whilst building on your own skills and confidence. We also offer a range of trips and excursions including court visits, trips to prisons and the Houses of Parliament.

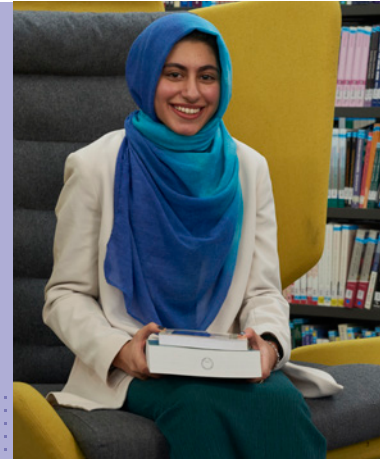
## Student societies

Whichever course you study you will find relevant student run clubs and societies to get involved with. Our department works closely with the Student Law Society, the Student Criminology Society and the Social Science Society to offer a wide range of social and skill-building events including talks from guest speakers, academics and law firms.

## Extra-curricular activities including: mooting, negotiation, voice training and interviewing

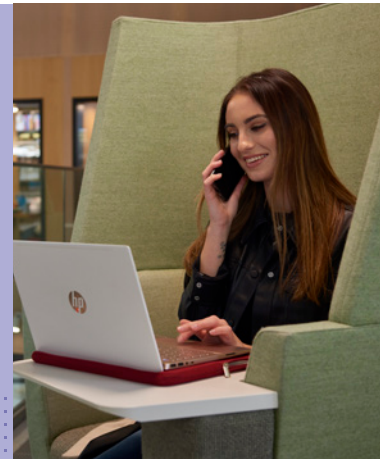
"It keeps your mind open and engaged with everything occurring around you. I particularly like the advocacy and social justice lens, thinking about how to create a better, safer and more accepting society."

**Aiman** BSc Social Science



"The communication is amazing here. The department is very friendly and lecturers are always ready to help. They are all specialised in their field and their passion is visible through every lecture they do."

**Paulina** BSc Criminology and Sociology



# Your future career

Graduating with a degree from our department, you'll be equipped with a wide range of transferable skills which are highly sought after by employers. Throughout your studies you will learn how to carry out independent research, analyse data and present your findings as well as developing your written and oral communication, time management and research skills. Our graduates leave with skills and knowledge that not only make them attractive to employers in a broad spectrum of careers, but also prepare them for further advanced study.

We have excellent links with law firms, prisons, government bodies and charities. Recent graduates have gone on to pursue careers in a variety of fields including the Crown Prosecution Service, the civil service, the police, the probation service, youth custody, the prison service and the National Crime Agency.

**Our graduates have found work with law firms, the Crown Prosecution Service, the police, the probation service, the prison service and the National Crime Agency**

This brochure was produced in November 2025 and information was correct at that time. Please make sure you check our website or contact us directly for the very latest information if you are considering an application.







## ROYAL HOLLOWAY, UNIVERSITY OF LONDON

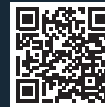
- Learn from world leading experts
- Highly ranked for student satisfaction
- Beautiful campus in a safe location
- Vibrant and active community
- Award-winning careers service

### Visit us to find out more

Our Open Days are a great way to get a feel for life at Royal Holloway. Look around the campus, meet our students and staff, and find out more about studying and living here.

Find out more and register to attend at  
**[Roya1holloway.ac.uk/opendays](https://royalholloway.ac.uk/opendays)**

Royal Holloway, University of London  
Egham, Surrey, TW20 0EX  
+44 (0)1784 434455  
[royalholloway.ac.uk](https://royalholloway.ac.uk)



**[royalholloway.ac.uk/  
lawandcriminology](https://royalholloway.ac.uk/lawandcriminology)**