



Philosophy

Undergraduate Studies



ROYAL
HOLLOWAY
UNIVERSITY
OF LONDON

Welcome



Philosophy at Royal Holloway offers you an exciting and unique opportunity to study one of the oldest and most fundamental forms of human enquiry. We have a distinctive programme that works across the division between analytic and continental philosophy and emphasises how contemporary problems of enormous practical and theoretical importance can often

only be understood and therefore addressed satisfactorily through an understanding of how they have changed and developed through time. By helping you to fathom what the world and we – as part of that world – are like, our aim is to equip you with some of the skills and the understanding required to shape both in a better image.

Dr Henry Somers-Hall

Head of Philosophy

School of Politics, International Relations and Philosophy



92%

SAY THE COURSE IS
**INTELLECTUALLY
STIMULATING**

*(School of Politics, International
Relations and Philosophy,
National Student Survey 2017)*

Contact details

Admissions Tutor

Dr John Sellars

john.sellars@royalholloway.ac.uk

+44 (0)1784 276144

General enquiries

+44 (0)1784 276315

philosophy@royalholloway.ac.uk

Connect with us



@RHULPhilosophy



RoyalHollowayPhilosophy

royalholloway.ac.uk/philosophy

Philosophy at Royal Holloway

“Philosophy is a battle against the bewitchment of intelligence by language”

Wittgenstein

At Royal Holloway you will:

- be part of a course that goes beyond the narrow confines of work that remains within the analytic tradition or the European tradition alone, recognising that such divisions are rapidly becoming outmoded.
- explore the key issues, thinkers and texts most likely to determine the future development of philosophy and of our conception of ourselves and our place in nature.
- be taught by academics who are internationally-recognised authorities in their research areas and have published major books on key philosophical topics.
- collaborate with and enjoy the support of the Institute of Philosophy in the School of Advanced Study at the University of London. The Institute offers a very wide range of conferences, seminars and lectures.
- have the opportunity to do further research and, if you choose an academic career in philosophy, be able to apply for jobs in a greater variety of departments than if you had only studied either analytic or European philosophy.
- enjoy our spectacular location in the College’s beautiful and historic Founder’s Building.



Jess, left, in the Founder’s Building, home of the Department of Philosophy

The Department of Philosophy is so special because as soon as you join you become a part of a small, tight-knit community which cultivates interesting, exciting and daring conversation with eager and open-minded people.”

Jess
BA Philosophy

Choosing your degree

If you are looking to fully immerse yourself in philosophy at Royal Holloway then the single honours BA Philosophy is the course for you. The degree offers a thorough grounding in the Anglo-American, French and German philosophical traditions, as well as exploring the continuing relevance of philosophy's origins in Greek thought. In addition to lectures and seminars, new students meet weekly in small tutorial groups with a member of the philosophy staff to discuss a piece of work they have been set and to evaluate the essays they have written. This helps develop the kind of critical and personal skills you'll need both for higher-level academic work and for your future career.

Joint degree programmes (50% Philosophy and 50% in another area) are available with a wide range of subjects. The philosophy component of these degrees consist of core first year foundation courses, with increasing flexibility of choice in the second and third years. You will write a final year dissertation based on independent research in either philosophy or in your other subject area.

The minor degree programmes in philosophy consist of 25% Philosophy and 75% of your other subject. These combinations are also available with different subjects, including Film Studies, Mathematics and Physics. We also offer BA Politics, Philosophy and Economics (PPE) which allows you to combine all three of these disciplines.

DEGREE PROGRAMMES	UCAS code
BA Philosophy	V500
JOINT DEGREES	
BA Ancient History & Philosophy	VV15
BA Classical Studies & Philosophy	QV8M
BA Classics & Philosophy	QV85
BA Comparative Literature and Culture & Philosophy	QV25
BA Drama & Philosophy	WV45
BA English & Philosophy	QV35
BA History & Philosophy	VV51
BA Modern Languages & Philosophy	RV95
BA Music & Philosophy	WV35
BA Politics and International Relations & Philosophy	LV25
BA Politics, Philosophy and Economics (PPE)	LOV0
PHILOSOPHY AS A MINOR SUBJECT	
BA Ancient History with Philosophy	V1V5
BA Classical Studies with Philosophy	Q9V5
BA Classics with Philosophy	Q8V5
BA Comparative Literature and Culture with Philosophy	Q2V5
BA Drama with Philosophy	W4V5
BA English with Philosophy	Q3V5
BA Film Studies with Philosophy	W6V5
BSc Mathematics with Philosophy	G1V5
BA Modern Languages with Philosophy	R9V5
BA Music with Philosophy	W3V5
BA Physics with Philosophy	F3V5
BA Politics with Philosophy	L2V5

Studying here

Teaching and assessment

Teaching varies between courses but is carried out principally by means of lectures and seminars. Larger courses normally consist of one lecture and one parallel tutorial seminar per week. Smaller courses are run in single two-hour slots per week, and consist of a lecture and seminar, a two-hour seminar or some other two-hour format. Most course units contain an element of assessed coursework, which contributes to the final mark awarded. In some cases coursework does not formally count towards assessment, but submission is nevertheless required. Coursework can consist of essays, presentations (in some cases assessed) and/or assessed seminar participation marks.

Facilities

Royal Holloway's new library provides all the facilities expected of a modern university library in an excellent environment: comfortable reader spaces, easy access to books and journals, and the very latest technology. Students also have access to libraries in central London, and have borrowing privileges and full remote access to all the electronic resources available from Senate House Library, which houses some 14 million items. The Computer Centre has a wide range of computing facilities, and is open 24-hours a day. There are numerous computer rooms across the campus and a wireless network that includes lecture theatres.



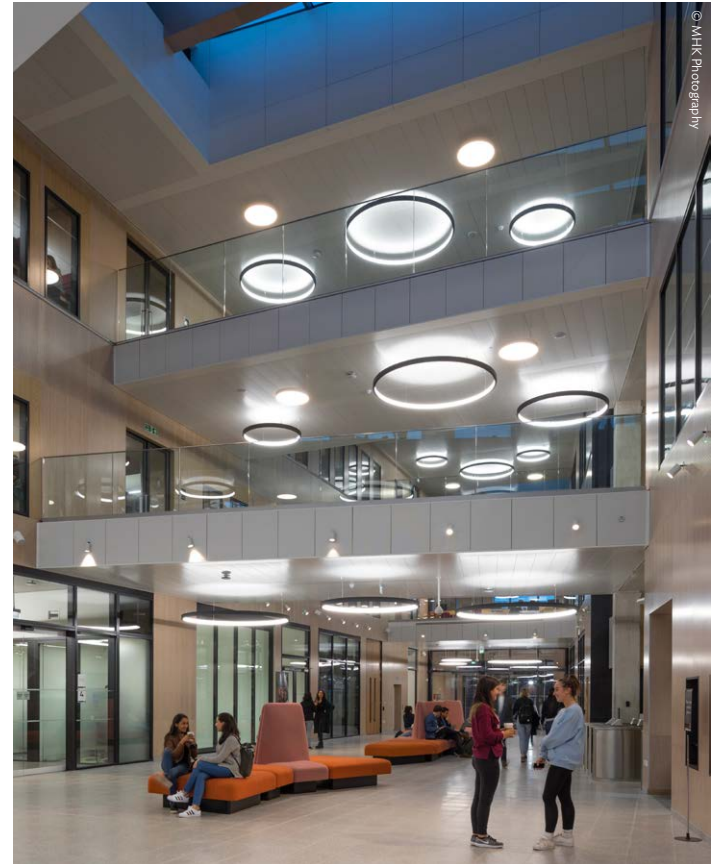
Student Life

Welfare and support

All undergraduate students have a personal tutor who provides advice and support, They help you choose your courses and offer academic and personal support during your degree, referring you to the wider range of College welfare services if necessary. Our academic staff as a whole operate an open door policy and students are welcome to see any of the academic or administrative staff who are available.

PhilSoc

There is a wide variety of social, intellectual and sporting clubs and societies on campus, including the Royal Holloway Philosophy Society (PhilSoc) run by philosophy students. PhilSoc aims to provide students with an outlet to pursue philosophical interests and is open to students across campus, not just those studying philosophy degrees. They offer guest lectures, a philosophy reading group, workshops and student-led talks on philosophical topics.



Your future career

Philosophy degrees are well-regarded by employers because they give you the capacity to think through issues and problems in a logical and consistent way, and to develop critical skills which can be applied in almost any area of employment, from computing to the arts. Our degrees also prepare you well for postgraduate study in many areas, not just in Philosophy. Depending on the exact course combination you choose, you might go on to find work in fields as diverse as teaching, technology, law, finance or even the intelligence services. The strengths a Philosophy degree will give you:

- an ability to absorb, sift and communicate complex ideas, both orally and in writing
- the capacity to work in groups and to communicate and defend standpoints
- the ability to communicate persuasively to an intended audience
- independent logical and critical thinking
- awareness of the historical and social development of thought, leading to theoretical innovation.

We run an award winning work placement scheme for students in their second year, and we have placed students in internships with the Daily Telegraph, the Press Association, literary agencies, publishers and media companies in London. The scheme provides training in interview technique and producing a good CV, practical experience in an industry you wish to work in, and a network of contacts.

We work in partnership with the College's dedicated Careers and Employability Service to help you enhance your employability and prepare for the choices ahead.



This brochure was produced in Spring 2018 and information was correct at that time. Please make sure you check our website or contact us directly for the very latest information if you are considering an application.



Royal Holloway, University of London

- Learn from world leading experts
- Highly ranked for student satisfaction
- Beautiful campus in a safe location
- Vibrant and active community
- Award-winning careers service

Visit us to find out more

Our Open Days are a great way to get a feel for life at Royal Holloway. Look around the campus, meet our students and staff, and find out more about studying and living here.

Find out more and register to attend at [Royalholloway.ac.uk/opendays](https://royalholloway.ac.uk/opendays)