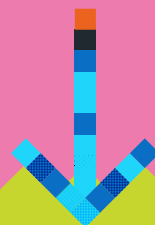


# AN A-TO-Z GUIDE TO UNIVERSITY APPLICATIONS

This A-to-Z guide will help you get your head around the main terminology you'll encounter as your young person navigates the application process.



- **Clearing:** Another service to apply through once your student has their grades. This method suits mind-changers, late applications and those who missed their offer. For full details, visit [royalholloway.ac.uk/studying-here/applying/](https://royalholloway.ac.uk/studying-here/applying/)
- **Conditional offer:** This offer is based upon the student attaining the entry requirements set by the university for a specific course. It will give the student a goal to work towards and you can encourage them in achieving these grades.
- **Confirmation:** The outcome of a conditional offer that your student has accepted.
- **Contextual offer:** An offer made in respect to personal circumstances. This might be an adjusted offer, with slightly tweaked entry requirements. For more information, visit [royalholloway.ac.uk/studying-here/schools-and-colleges/widening-access/](https://royalholloway.ac.uk/studying-here/schools-and-colleges/widening-access/)
- **Deferral:** Carrying over an offer to the next academic year.
- **Entry requirements:** What we ask for students to have or do to make for a successful application – i.e. Specific grades, admission tests, language requirements. These are listed on each of our course pages.
- **Firm choice:** The top offer that your student accepts. For a conditional offer, they'll get the place once they meet the conditions, and for an unconditional offer, the place is theirs.
- **Foundation year:** A dedicated year-long course we offer to help ensure a seamless transition to studying at university-level. Available in a wide range of subjects, these support students who may need a little more support. Visit [royalholloway.ac.uk/studying-here/applying/foundation-year/](https://royalholloway.ac.uk/studying-here/applying/foundation-year/)
- **Insurance choice:** The 'next best' should your student miss the conditions of their firm choice.
- **Personal statement:** A persuasive essay your applicant writes to back-up their applications and show off why they'd be a brilliant student. This commonly causes lots of worry, but you can find tips at [royalholloway.ac.uk/studying-here/applying/undergraduate/how-to-apply/](https://royalholloway.ac.uk/studying-here/applying/undergraduate/how-to-apply/)
- **Unconditional offer:** If your student has already achieved the necessary academic grades to meet the entry requirements for the course, they'll receive an unconditional offer. This means the place is theirs if they want it.

Royal Holloway, University of London  
Egham, Surrey TW20 0EX  
+44 (0)1784 414944  
[parents@royalholloway.ac.uk](mailto:parents@royalholloway.ac.uk)

[royalholloway.ac.uk](https://royalholloway.ac.uk)



ROYAL  
HOLLOWAY  
UNIVERSITY  
OF LONDON