



Undergraduate Studies



ROYAL  
HOLLOWAY  
UNIVERSITY  
OF LONDON

# Welcome



I am delighted that you are considering studying Earth Sciences with us. We are one of the leading centres of research and teaching in the UK, and our knowledge and expertise in earth and environmental sciences is making an impact across the globe.

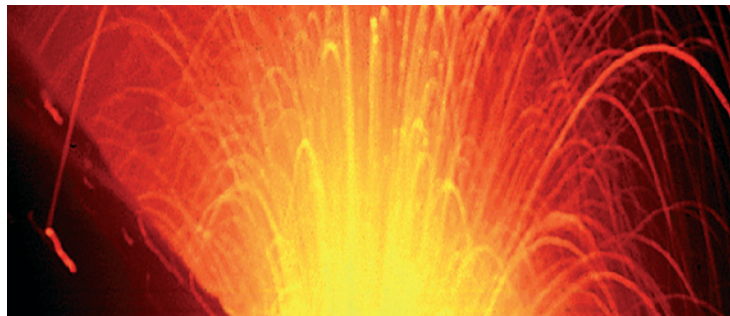
This is a friendly and supportive department where you will be valued

as a member of our close-knit community. Our world-leading academic staff will inspire and challenge you, bringing you closer to some of the foremost thinking in geoscience research. You will also gain fieldwork experience at exciting and stimulating field sites in the UK, Europe and beyond.

As well as our leading research, our curriculum is also informed by well-established industry connections and you can be confident that here you can acquire the knowledge, practical and technical skills that will lead you to a rewarding career.

We look forward to meeting you at one of our Open Days held throughout the year.

**Professor Jürgen Adam**  
Head of Department



**5<sup>th</sup>** IN THE UK FOR  
**GRADUATE**  
**PROSPECTS**

(Complete University Guide, 2021)

**94%** RESEARCH  
RATED  
**4\* OR 3\***  
WORLD LEADING OR  
INTERNATIONALLY EXCELLENT

(Research Excellence Framework, 2014)

## Contact details

### Admissions enquiries

Dr Amy Gough  
admissions@es.rhul.ac.uk

Department of Earth Sciences  
Royal Holloway, University of London  
Egham, Surrey, TW20 0EX, UK

### Connect with us

 @RHULearthsci

 RHULEarth Sci

[royalholloway.ac.uk/earthsciences](http://royalholloway.ac.uk/earthsciences)

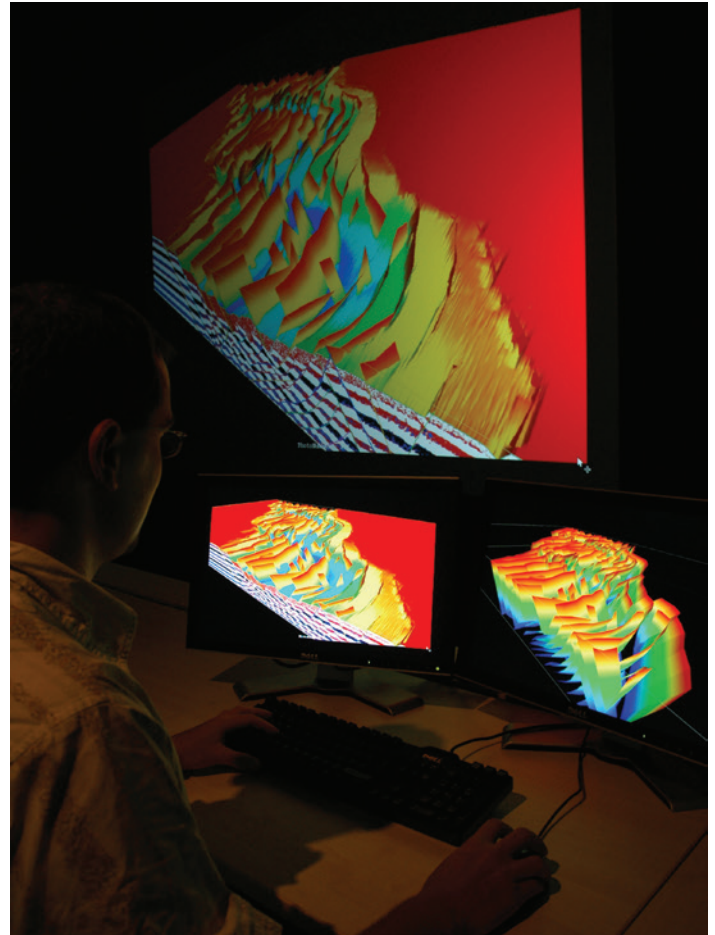
# Earth Sciences at Royal Holloway

The Department of Earth Sciences is internationally recognised for excellent teaching and research that is at the forefront of investigating the earth system and environmental science. We recognise the importance of sustainable Geosciences and the need for graduates who are leaders of the movement to understand climate change and to support the energy transition.

We maintain vital links with industrial and commercial partners providing research support, industry experience and employment for our graduates.

Staff are leading authorities in their field and, together with state-of-the-art facilities, we provide our students with every opportunity to succeed in their chosen career. We offer:

- a curriculum informed by world-class research, ensuring our degree programmes are up to-date with the latest developments and are taught by leading experts in geoscience research.
- an extensive range of facilities, with world-leading laboratories for geochemical analysis, sedimentology and palaeontology, and specialist modelling laboratories for recreating earth structures.
- a high quality fieldwork programme complementing our degrees by bringing the syllabus to life, taking you to some of the best geological locations in the UK, Europe and further afield.
- a friendly community with a personal adviser system and individual supervision of projects, which means we really support our students at every stage.
- industrial links and networking opportunities with companies recruiting for geological placements and jobs, resulting in one of the highest graduate employment track records in the UK.





# Choosing your degree

You can choose from a wide range of degree courses with flexibility to inspire your interests across the spectrum of Earth Sciences, complemented by an exciting fieldwork programme to help bring the syllabus to life. Our compelling course curriculum is underpinned by our cutting-edge research which means you will be in touch with the very latest developments in the broad disciplines of:

- Geodynamics and sedimentary systems
- Global environmental change
- Physics and chemistry of earth

Our degrees are accredited by the Geological Society which sets the highest standards in field and laboratory teaching and can lead to Chartered Geologist status.

## Undergraduate study

We offer 3 or 4 year degree courses in Geoscience, Petroleum Geology and Environmental Geology, giving a thorough grounding in all aspects of modern Earth Sciences. Our innovative degree, Digital Geosciences specialises in the increasingly digital-centric scope of geological work through computation and data analysis, a skill-set that is highly sought after in a range of industries.

Our extended 4 year MSci degrees will equip you with a deeper knowledge and advanced skills suitable for continuing into the worlds of academic or applied geosciences. You can also choose to expand your horizons through an International year or an Industrial year option, placing you in new and challenging learning environments and cultures.

For details of current module options, and our entry requirements please see our website.

No previous qualifications in geology are required to join our undergraduate degrees.

DEGREES	UCAS code
BSc Digital Geosciences	F640
BSc Environmental Geology	F630
BSc Environmental Geology with a Year in Industry	F690
BSc Geology	F600
BSc Geology with a Year in Industry	F603
BSc Petroleum Geology	F620
MSci Environmental Geoscience	F631
MSci Environmental Geoscience with a Year in Industry	F644
MSci Environmental Geoscience with an International Year*	FP42
MSci Geoscience	F601
MSci Geoscience with a Year in Industry	F642
MSci Geoscience with a Year of International Study*	F602
BSc Earth, Climate and Environmental Change**	F764
MSci Earth, Climate and Environmental Change**	F767
BSc Geosciences and Sustainable Energy**	FH62
BA Environment and Social Change***	F650
BSc Environment and Social Change***	F660

\* International Year option: As part of MSci courses FP42 and F602, students can elect to spend a year abroad (Canada, USA, Australia or New Zealand).

\*\* New degrees under development for 2021 entry

\*\*\* New interdisciplinary degrees under development for 2021 entry

## Studying here

Our teaching programme emphasises the interconnectedness of the Earth System. First and second year core courses consider the Earth as a dynamic system, the interaction between physical and chemical processes acting at and below the surface, the environment and the evolution of life. In the final year(s), you will go on to deepen your knowledge by choosing from a range of multidisciplinary options that reflect the research strengths and interests of staff as you develop your interests.

Independent project work and fieldwork form a large part of our degree courses. Our lectures primarily define the learning agenda, and knowledge and understanding are supplemented through independent reading and research. There is a strong practical element and you will develop key skills through exercises in the classroom, laboratory and field.

### Fieldwork opportunities

Fieldwork is an important part of a geologist's training and it will equip you with knowledge and skills that can be used internationally. Our fieldwork provides training in the field interpretation of stratigraphy, sedimentology, tectonics and igneous processes. Mapping courses include a number of small projects and a major field mapping exercise in the second year.

The department organises a variety of trips, both in the UK and abroad, lasting from one day to several weeks.

UK trips have included: Mull, Skye, North Somerset, Lake District, and South Devon.

International trips have included: Almeria Spain, Cyprus, Digne France, Florida USA, Pyrenees Spain, Tenerife, and Iceland.

### Supportive learning

We are an extremely friendly and supportive community. The whole department has a strong culture of support for students, with an allocated personal tutor system to help guide you in your studies.



9<sup>th</sup> IN THE  
UK

(Times and Sunday Times Good  
University Guide, 2020)

95%  
OVERALL  
SATISFACTION  
FROM OUR STUDENTS

(National Student Survey, 2020)

# Student Life

Sir Charles Lyell (1797–1875), was one of the founders of modern geology and The Lyell Geoscience Society is named in his honour. The society is run by students and it coordinates a number of events throughout the academic year. These include guest lectures during term time on a wide range of cutting edge topics, culminating in the annual Lyell Symposium during which talks are given by internationally-recognised specialists from industry as well as visiting academics. The student-organised social events maintain a friendly, social atmosphere between students of all years and members of staff.



## Our community

We admit around 65 undergraduate students every year, on a wide range of degrees. We also have a dynamic community of postgraduate students across our highly regarded Masters degrees, MPhil and PhD research opportunities. We are one of five universities involved in the Advanced Research and Innovation in Environmental Science (ARIES) Doctoral Training Partnership, which recently received over £5million from the Natural Environmental Research Council (NERC) to equip postgraduate researchers with the necessary skills to become leaders in the science and business of the environment for the 21st century.

Our department has been rated the second best in the country for the originality, significance and rigour of our research. In fact, 94% of our research has been classified as world-leading and internationally excellent, consistent with our history as one of the leading centres for Earth Science research in the UK.

The department has a vast array of specialist equipment supporting teaching and research into atmospheric sciences, geochemistry, geophysics, mineralisation, magmatism, sedimentology, stratigraphy, structural geology, palaeobiology, and volcanology. Our department is part of the School of Life Sciences and the Environment, an integrated and well-supported community of students and staff.



“The sense of camaraderie between staff and students is infectious, with the work being both challenging yet rewarding. It has been a joy to study Earth Sciences at Royal Holloway and I have made lasting friends and memories here.”

**Robert**  
BSc Geology

# Your future career

Geologists have a role to play in global exploration for whatever raw materials we need – water, minerals, oil and gas. Geologists also understand the environment and can provide answers to global problems like climate change and waste disposal.

Our graduates are highly employable and have gone on to work in a wide variety of areas, such as oil and gas industries, water authorities, environmental agencies, media organisations and news agencies, banking, insurance and consultancy.

The department and Royal Holloway's Careers and Employability team support you in a range of ways to recognise and develop your own strengths, skills and abilities and to plan ahead for your future career. You will also benefit from:


- Industry representatives regularly make recruitment visits to the department, providing opportunities for current students in the job market.
- Many of our students undertake internships which helps prepare them to move into the career of their choice.
- We maintain strong links with our alumni, who are able to provide advice, contacts and networking opportunities for students. Each year, we offer students the opportunity to be paired with alumni mentors in industry. These unique and invaluable experiences have resulted in relevant paid internships, and have been pivotal in launching the careers of our students.



“Studying Geology at Royal Holloway launched my career and was the best time of my life. Since graduating, I’ve become a Geotechnical Engineer, taking me all over the UK. I’ve been involved in a range of projects including constructing tunnels for London’s Crossrail Project, repairing dams in Snowdonia,

and remediating old mine sites in Kent. Studying Geology at Royal Holloway was the start of all that – and the course exceeded my expectations in every way!”

**Helayna, BSc Geology**

**93**  **%**  
**OF GRADUATES  
ARE EMPLOYED  
OR IN FURTHER STUDY  
WITHIN SIX MONTHS**

*(Destination of Leavers in Higher Education, 2018)*

This brochure was produced in September 2020 and information was correct at that time. Please make sure you check our website or contact us directly for the very latest information if you are considering an application.



## **Royal Holloway, University of London**

- Learn from world leading experts
- Highly ranked for student satisfaction
- Beautiful campus in a safe location
- Vibrant and active community
- Award-winning careers service

### **Visit us to find out more**

Our Open Days are a great way to get a feel for life at Royal Holloway. Look around the campus, meet our students and staff, and find out more about studying and living here.

Find out more and register to attend at  
**[Royalholloway.ac.uk/opendays](https://royalholloway.ac.uk/opendays)**

**Royal Holloway, University of London**

Egham, Surrey, TW20 0EX

+44 (0)1784 434455

[royalholloway.ac.uk](https://royalholloway.ac.uk)