



Welcome to  
Royal Holloway, University of London



ROYAL  
HOLLOWAY  
UNIVERSITY  
OF LONDON



# Contents

- 3 Welcome to Royal Holloway, University of London
- 4 Welcome from the International team
- 6 Why study at Royal Holloway?
- 7 Our international community
- 8 Campus map
- 10 Local area
- 12 Sport
- 13 Societies
- 14 Accommodation
- 15 Support services
- 17 Careers and employability
- 18 Fees and funding
- 19 Scholarships
- 20 International Study Centre
- 21 English language requirements
- 22 Study styles
- 22 Academic departments
- 23 Application timeline



# Welcome to Royal Holloway, University of London

Royal Holloway is ranked highly in the UK for the quality of both our research and teaching. It has a rich history, a stunning and inspiring campus and, most importantly, a strong, close-knit community which supports our students to succeed academically, personally and culturally.

You are embarking on what may be one of the most important journeys of your life. When you invest in your future by deciding to study at university, you make choices that could help influence who you are, the friends you have and the person you become – exploring your purpose to help achieve your future goals.

As one of the UK's most international universities, ours is also a global community. Our academics and students come from all over the world, bringing diverse perspectives to your studies.

I hope that you'll want to join in our story too, and I look forward to welcoming you here.

## **Professor Paul Layzell**

Principal

Royal Holloway, University of London



# Welcome from the International team


We are here to help you with any questions that you have about studying at Royal Holloway, whether you are just starting to think about studying or if you have already applied to us. We often travel overseas to meet with students and parents at fairs, schools and agent offices. If you have any questions about your application, email us at [international@royalholloway.ac.uk](mailto:international@royalholloway.ac.uk).

More information on our International team can be found at [royalholloway.ac.uk/studying-here/international-team](https://royalholloway.ac.uk/studying-here/international-team)

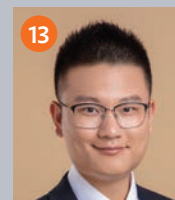
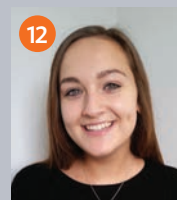
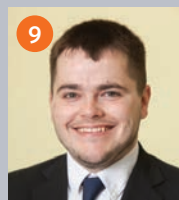
## International Student Support

We provide information and advice before you arrive and while you are studying with us. We can help you with non-academic matters such as immigration and visa support, cultural issues and daily life in the UK. We also arrange a 'meet and greet' with other students along with a welcome and orientation to the UK, to help you settle in after you arrive.

For non-academic questions, contact us at [internationaladvice@royalholloway.ac.uk](mailto:internationaladvice@royalholloway.ac.uk)

- 
- 1 **Jamie Pipkin**  
International Student Recruitment Regional Manager  
(Europe)
  - 2 **Alejandro Orozco**  
Head of International Student Recruitment
  - 3 **Simon Stanley**  
International Student Recruitment Regional Manager  
(South Asia and South East Asia)
  - 4 **Lani Allan**  
International Student Recruitment Officer  
(Middle East and North America)
  - 5 **Hannah Ehlela**  
International Student Recruitment Regional Manager  
(Middle East, North Africa and Central Asia)
  - 6 **Jonathan Moore**  
International Student Recruitment Regional Manager  
(North America)
  - 7 **Nathan Whittaker**  
International Student Recruitment Regional Manager  
(China and East Asia)

- 
- 8 **Khalid Abbas**  
International Student Recruitment Coordinator
  - 9 **Sam Gibson**  
International Student Recruitment Regional Manager  
(UK International, Africa, Japan and South Korea)
  - 10 **Karan Shokeen**  
Senior Recruitment Adviser  
(India)
  - 11 **Sarah Morris**  
International Student Recruitment Administrator
  - 12 **Danielle Priest**  
International Student Recruitment Officer  
(South East Asia)
  - 13 **Ruifan Zhou**  
International Student Recruitment Officer  
(China)



# Why study at Royal Holloway?

**TOP 20**  
UNIVERSITY  
IN THE UK

(Times and Sunday Times Good  
University Guide, 2020)

Inspiring individuals  
to succeed

AN **INDIVIDUAL**  
EDUCATION  
WITH EMPHASIS ON  
**PERSONALISATION**  
AND A STRONG  
SENSE OF **COMMUNITY**

HIGHER STUDENT  
SATISFACTION  
**RUSSELL GROUP**  
INSTITUTIONS



(National Student Survey, 2019)

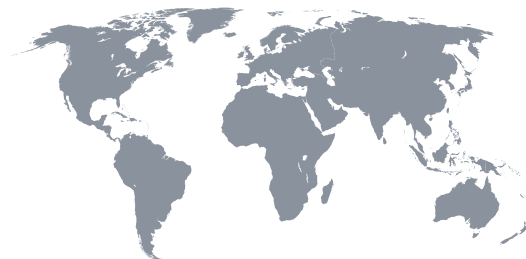
**AWARD-WINNING**  
MICRO-PLACEMENTS  
**SCHEME**  
GIVING STUDENTS  
**PROFESSIONAL**  
WORK EXPERIENCE

A global spirit

**21<sup>st</sup>** IN THE UK FOR  
**INTERNATIONAL**  
**OUTLOOK**

(Times Higher Education  
World University Rankings, 2020)

**90,000** ALUMNI IN  
**165 COUNTRIES**





## Our international community

“My main priority was to be able to concentrate on my chosen studies in an environment which would be a contrast to my busy life in Taiwan. I chose to study at Royal Holloway after watching a film of the campus, which showcased the contrasts between the new and old buildings as well as the green surroundings. Whilst here I have immersed myself in my studies but also challenged myself to explore different opportunities such as working on campus and being a panellist at panel discussions.”

**Chen-Ju**  
Taiwan



“Everyone at Royal Holloway makes you feel supported, from your academic department to the Students’ Union. As an international student I was concerned I wouldn’t fit in but it’s been so easy to get involved. There are societies to accommodate everyone! I am away from my family in Jordan for three to four months at a time so I love the environment here which makes me feel comfortable and safe and has everything I need close by.”

**Eleni**  
Jordan

# Campus map



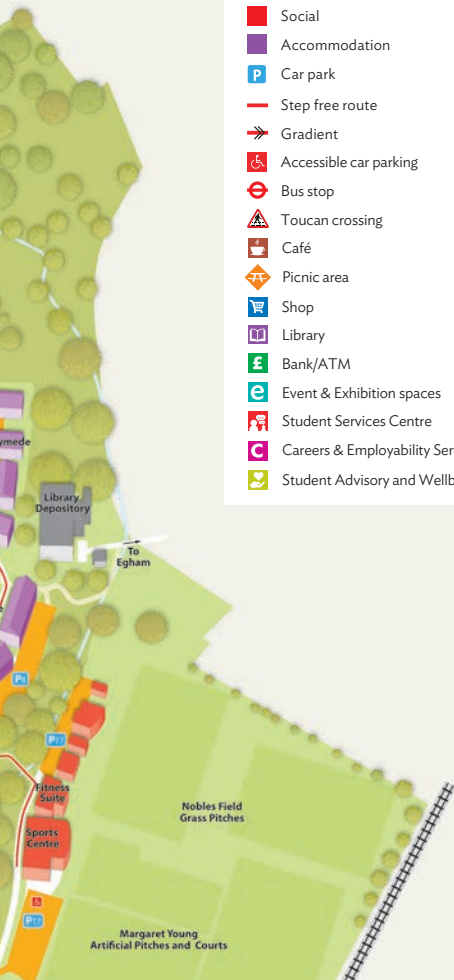
Kingswood





## Key

- Academic
- Social
- Accommodation
- Car park
- Step free route
- Gradient
- Accessible car parking
- Bus stop
- Toucan crossing
- Café
- Picnic area
- Shop
- Library
- Bank/ATM
- Event & Exhibition spaces
- Student Services Centre
- Careers & Employability Service
- Student Advisory and Wellbeing



## Did you know?

If you can't make an Open Day feel free to email [international@royalholloway.ac.uk](mailto:international@royalholloway.ac.uk) and we will do our best to arrange a campus tour. Alternatively visit [royalholloway.ac.uk/virtual-experience](http://royalholloway.ac.uk/virtual-experience) to experience our virtual campus tour from your own home.

## Central London Campus

We offer a set of postgraduate courses at our campus in Bedford Square, Central London. This includes a suite in the University of London's impressive headquarters, Senate House, opposite the British Museum. These stunning buildings, just five minutes apart, provide an inspiring and vibrant environment to stimulate creative and critical thinking. Limited accommodation is also available to full-time postgraduate students studying in London, in the University of London's intercollegiate halls.

## WINDSOR AND WINDSOR GREAT PARK

The sweeping parkland and woods of Windsor Great Park and Windsor is home to the famous Windsor Castle and numerous restaurants and shops.



## HEATHROW AIRPORT



Heathrow is the main UK airport, just 30 mins from the campus. We arrange a Meet & Greet service in September.



With London just 40 minutes away by train there's a wealth of entertainment and cultural offerings at your fingertips.

## LONDON



## LOCAL AREA



## VIRGINIA WATER LAKE



Virginia Water Lake, with its lakes, Roman ruins and totem pole, is within walking distance of campus.



## EGHAM AND ENGLEFIELD GREEN



Egham and Englefield Green are your nearest town and village with shopping amenities and a direct train line to London from Egham.



## STAINES-UPON-THAMES

Staines-upon-Thames is the nearest big town. Here you will find a range of high street shops, a cinema and numerous restaurants.



## THORPE PARK



Thorpe Park is one of the UK's premier theme parks with thrill rides and rollercoasters, just down the road.



## RICHMOND AND TWICKENHAM



Richmond and Twickenham are a short train ride away and offers walks, parks and gardens as well as theatre and shopping.



## Local area

Royal Holloway is consistently recognised as one of the safest university campuses and Egham the safest university town in the UK\*, with plenty to experience in the local area.

If food and drink is your passion, you can buy street food at the weekly food market on campus or enjoy brunch at one of our campus eateries such as the Café on the Square, the Hub or Kimiko Japanese Kitchen. The town of Staines-Upon-Thames is just a short bus ride away, where you can enjoy a wide variety of cuisine as well as social activities such as the movies or a comedy evening at nearby Windsor.

On the weekend you can enjoy a thrilling day out at Thorpe Park theme park, or on certain weekends, have a more refined day at the horse racing at Ascot or watch a game of rugby at Twickenham. You can 'shop-till-you-drop' in Windsor then visit Windsor Castle, you may even glimpse the Queen if she is in residence. From Windsor you can also take a chartered boat ride down the Thames River.

If you fancy a picnic or a walk there are acres of green parkland in Virginia Water, Savill Garden and Windsor Great Park (see if you can complete the Long Walk) or stroll around historic Runnymede and the Magna Carta trail.

London Waterloo station and all the delights of London are only 40 minutes away by train, with a thriving nightlife and many exciting things to see and do.

*\*Source: The 10 safest places to be a student, Times Higher Education, 2018*

### Did you know?

Dr Seuss was a temporary resident of Egham during the Second World War and cited 'green Egham' as the inspiration for his famous book *Green Eggs and Ham*.





# Sport

Here at Royal Holloway you'll find a variety of opportunities to keep you active, from recreational to competitive. For those seeking to join a competitive sporting team we have over 35 clubs to choose from, ranging from football and hockey to ninjutsu and cycling. Our clubs compete at the highest levels in local and national competitions and our

teams compete in weekly British Universities & Colleges Sport (BUCS) and London Universities Sports Leagues (LUSL), as well as one-off competitions and individual events. Joining these clubs not only gives you a chance to get active and to make friends but also to represent your university.



Our on-campus sports facilities include a multi-use sports hall, a well-equipped fitness suite and an aerobics area. World-class, floodlit outdoor pitches and courts provide all-weather playing surfaces. We are fortunate to have two grass football pitches, an American Football field, a cricket pitch, eight tennis courts and five netball courts – all on campus.

# Societies

University is a place where you can develop body, mind and spirit. With over 110 different societies to choose from on campus, you'll be guaranteed to find something that appeals to you, during your time with us.

Make friends for life through shared experiences, challenges, ambitions and ideals, not forgetting the regular socials and societies themed 'takeovers' of Students' Union nights. Ranging from the fun, frivolous and creative, to the career-specific, and the practical to theoretical, all our societies require no previous experience, just a willingness to get involved and have fun.

The question is which ones to choose?



Summer Ball

- ☐ Bhangra
- ☐ Insanity Radio
- ☐ Film
- ☐ Games
- ☐ Harry Potter
- ☐ Comedy
- ☐ Musical Theatre
- ☐ Salsa
- ☐ FinTech
- ☐ Climate Action
- ☐ Diving
- ☐ Women of Colour
- ☐ Travel
- ☐ Yoga
- ☐ K-Pop



Tom Bright

## Accommodation

Royal Holloway's beautiful campus and surrounding area are a great place to live. Our halls of residence make comfortable homes providing good value for money so you can make the most of your time at university. Each hall has a team of residential, operational, security and maintenance support staff dedicated to helping to settle you in and help you feel at home.

Undergraduate halls	Room type	Catering	Bathroom type	Price range per academic year*
Founder's Building	Single and shared	Catered	Shared	£4,834 - £6,917
Kingswood 1 and 2	Single	Catered	Shared	£3,575 - £5,777
Reid	Single	Catered	En suite	£5,223 - £6,686
George Eliot	Single	Self-catered	Shared	£6,914 - £8,680
Gowar and Wedderburn	Single	Self-catered	En suite	£6,914
Williamson, Tuke and Butler	Single	Self-catered	En suite	£5,722 - £6,914
Runnymede 1 and 2	Single	Self-catered	En suite	£6,392 - £6,729
Postgraduate halls				
George Eliot	Single	Self-catered	Shared	£8,680
Highfield Court	Single	Self-catered	En suite	£7,804
Penrose Court	Single	Self-catered	Shared	£6,806
Gowar	Single	Self-catered	En suite	£8,680

*\*based on 20/21 fees and are subject to change. Cost also depends on the length of contract and can be 30, 38, 40 or 50 weeks, depending on the hall.*

For the most up-to-date information on our accommodation options visit [royalholloway.ac.uk/accommodation](https://royalholloway.ac.uk/accommodation)



# Support services

It is very important for us that you feel at home when you come to Royal Holloway to study. We offer support and advice to you both before and after arrival. Some of our support services are listed here, and you are always welcome to contact us for further information. [internationaladvice@royalholloway.ac.uk](mailto:internationaladvice@royalholloway.ac.uk)

## Meet and greet

When you first arrive in the United Kingdom, we're ready to welcome you. We offer an airport pick-up service from Heathrow airport on certain dates in September for new EU and International students. This is a free service but you will need to book in advance.

## Visa and entry requirements

You may need to apply for a visa in order to study with us. The type of visa you will need will depend on what kind of course you intend to study:

- Full-time courses of longer than six months – you must apply for a Tier 4 (General) student visa.
- Short courses or study of less than six months – you can normally enter on a short term study visa but can also apply for a Tier 4 (General) student visa.
- If you are bringing members of your family with you, you may need a visa for each family member.

Our International Student Support Office are happy to help with any visa application you make.

## Welcome and orientation to the UK

During the first week of term, special activities are always planned to help new students settle into life at Royal Holloway. They give you the chance to meet students and staff in your academic department as well as students living in your halls of residence. There are also specific





orientation events designed for international students to let you know about the services and support available to you. If you have any questions or concerns the International Student Support Office is very happy to help.

### **Personal support**

We are renowned for our friendly and caring community and have dedicated advisory and wellbeing services to help you get the most out of your time here.

### **Health and wellbeing**

We encourage all of our students to seek help and advice as soon as possible if things aren't going quite to plan.

All of our students have free access to professionally-trained counsellors and further support is provided through the Chaplaincy.

**[royalholloway.ac.uk/student-support](https://royalholloway.ac.uk/student-support)**

### **Religion**

We are a diverse community and we support and encourage all the mainstream faith traditions. Our Multifaith Chaplaincy works with everyone, regardless of faith or belief to offer pastoral care and support as well as events to celebrate religious life on campus. In term time there are regular services in the Chapel and the Muslim Prayer Room. The Students' Union faith societies represent a wide range of faiths and cultures.

**[royalholloway.ac.uk/student-faith](https://royalholloway.ac.uk/student-faith)**

### **Diversity and inclusivity**

We are a strong and supportive community and have a zero tolerance approach to any form of bullying and harassment. We are also an NUS (National Union of Students) Alcohol Impact accredited institution and are committed to providing a range of inclusive activities.

# Careers and employability

From fresher to finalist, we will help you improve your employability and find career success in a competitive global workplace. Our Careers and Employability Service is part of The Careers Group, University of London – the largest and most comprehensive careers service in Europe.

Our service includes individual appointments, CV and application checks plus professional work experience opportunities such as part-time jobs, micro placements, internships and employer engagement on campus in the form of workshops and careers fairs.

AWARD-WINNING  
CAREERS SERVICE

**91% OF STUDENTS  
EMPLOYED OR  
IN FURTHER STUDY  
WITHIN SIX MONTHS**

*(Destinations of Leavers from Higher Education, 2018)*





# Fees and funding

## Tuition fees

Depending on the course you choose to study, annual tuition fees range from £15,900 - £22,600. (based on 2020/21 fees)

## Living costs

We estimate that a single student will spend between £8,000 and £12,000 over the academic year.

You will also need to take into account costs for travelling back home as well as visas plus travel and health insurance.

For more information, visit [www.royalholloway.ac.uk/feesandfunding](http://www.royalholloway.ac.uk/feesandfunding)

If you are an International student who needs a Tier 4 visa to enter and study in the UK, you will need to pay the £3,000 tuition fee deposit before a Confirmation of Acceptance for Study (CAS) number can be issued.

International students beginning a new course will have the option to pay their tuition fee in two equal instalments.

## Where does your money go?\*



60%

### Accommodation

A hall of residence costs between £3,575-£8,680 a year.



16%

### Food

Expect to spend around £40-£60 a week on basics.



16%

### Social life

You'll probably spend £50 a week on average, depending on what you like doing.



5%

### Transport

If you live locally to campus, with the occasional trip to London, this could cost you around £20 a week/£760 a year, more if you live further afield.



3%

### Books

Anything from £300-£450 a year, depending on your field and type of study. Try buying second-hand and using the libraries to save cash.

*\*All figures shown on this page are estimates*



Huon Crow/istockphoto

# Scholarships

Royal Holloway offers a large portfolio of scholarships to recognise excellence and achievement and to offer financial support to those whose background may be a barrier to study, from our International Future Leaders and Royal Holloway Principal's Masters Scholarships for academic excellence, to our sports scholarships and department-specific scholarships. For further details of these and other scholarships and extra funding opportunities available please visit [royalholloway.ac.uk/scholarships](https://royalholloway.ac.uk/scholarships)



Scholarship title	What is the award worth?	Am I eligible?	Do I need to apply?
International Future Leaders Scholarship	Tuition fee reduction of £4,000 for the first year of study	International undergraduate students only with expected A-level grades of AAB or equivalent	Yes. Once you have an offer to study you will need to apply
Reed Innovation Scholarship	£15,000 cash award, £5,000 paid each year for the first three years of study	International undergraduate students only with expected A-level grades of AAA or equivalent who demonstrate outstanding innovation	Yes. Once you have an offer to study you will need to apply
Royal Holloway Principal's Masters Scholarship	£4,000 tuition fee reduction	International students with at least a 2:1 undergraduate degree or equivalent. Candidates with Home/EU fee status will need a First Class undergraduate degree or equivalent	Yes. Once you have an offer to study you will need to apply

Other department-specific scholarships are available to international students covering areas such as Geography, English, Electronic Engineering, History and Physics. Scholarship offerings can change from year to year.

# International Study Centre



“When it comes to Economics and Mathematics, everything they taught us at the International Study Centre is based on what they are teaching us now. They’re building on my basic knowledge, which is helping me to improve in academics.”

**Christabel**  
Ghana

Royal Holloway’s on-campus International Study Centre offers a range of dedicated pathway programmes with additional academic support and smaller class sizes – to help you prepare for your degree at Royal Holloway. The Centre allows access to the facilities, services and accommodation at the university.

## What we offer

- An International Foundation Year starting in September or January that leads onto the first year of undergraduate studies. Choose from one of three pathways (Arts and Social Sciences, Management and Economics or Science) to lead you onto dozens of degree courses.
- The International Year One programme (starting from September 2020) is an alternative first year of specified Royal Holloway degrees for international students who require additional language and academic support. Students then progress directly into the second year of an undergraduate degree programme. Pathways include Business and Management, Computer Science, Electronic Engineering and Economics. All offer a September or a January intake.
- The Pre-Masters programme will allow students who just fall below our minimum requirements to join a range of Masters courses, should all academic requirements be met at the end of the programme. The Pre-Masters launches in March 2021.

For more information including how to apply, please visit [rhulisc.com](https://www.royalholloway.ac.uk/international)



# English language requirements

It is recommended to check the exact English language requirements for your course as they do vary. Generally for most of our courses we would require an IELTS score of 6.5 overall with no subsection lower than 5.5 (or equivalent).

## Pre-sessional programmes

We run a range of Pre-Sessional English Language programmes for students who are offered a place at Royal Holloway, but need to improve their academic English and study skills before they start their studies. Class sizes are small and supportive, with the intensive courses running for four, eight or 12 weeks.

Visit [royalholloway.ac.uk/pelp](http://royalholloway.ac.uk/pelp) to find out more.

## Dates and fees for 2020 entry

Programme length	Start date*	End date**	Tuition fees
12 weeks	18 June 2020	10 September 2020	£4,005
8 weeks	16 July 2020	10 September 2020	£2,735
4 weeks	13 August 2020	10 September 2020	£1,470

\* Subject to change in following years – please visit the website for the latest information.

\*\*This is the date on which students will move accommodation.

Final classes/assessments will be on 8 September.



# Study styles

You will have the chance to learn directly from world-leading experts with our focus on research-informed teaching, delivered in a number of ways including:

- Lectures, where the teacher presents and analyses information in front of a large group of students
- Seminars, classes and workshops: interactive sessions led by the teacher to smaller groups where topics are discussed in depth
- Practicals: hands-on experience of what's being taught
- Field/study trips: a chance to develop interests and knowledge off-campus.

Our degrees also come with real added value – you can choose to take a multidisciplinary unit outside of your home department, add a placement year in industry, study abroad or even take part in a voluntary humanitarian project.\*

*\*subject to visa requirements*



# Academic departments

- Biological Sciences
- Business and Management
- Classics
- Computer Science
- Drama, Theatre and Dance
- Earth Sciences
- Economics
- Electronic Engineering
- English
- Geography
- History
- Languages, Literatures and Cultures
- Law, Criminology and Sociology
- Mathematics
- Media Arts
- Music
- Philosophy
- Physics
- Politics and International Relations
- Psychology

# Application timeline

## Undergraduate



## Postgraduate



*\*not required if you have a scholarship that covers full tuition fees.*





#### **International team**


Royal Holloway, University of London, Egham, Surrey, TW20 0EX

+44 (0)1784 414944

[international@royalholloway.ac.uk](mailto:international@royalholloway.ac.uk)

[royalholloway.ac.uk/international](https://royalholloway.ac.uk/international)

 [facebook.com/royalholloway](https://facebook.com/royalholloway)

 [twitter.com/RoyalHolloway](https://twitter.com/RoyalHolloway)

 [instagram.com/royalholloway](https://instagram.com/royalholloway)