

# Wellbeing: Support & Guidance

## Supporting you with wellbeing guidance



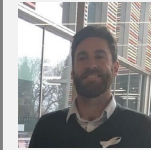
ROYAL  
HOLLOWAY  
UNIVERSITY  
OF LONDON



**Lucy Cox**  
Head of Support & Guidance



**Chris Evans**  
Harassment & Wellbeing Adviser



**Steve Stubbs**  
Harassment & Wellbeing Adviser



**Emma Stanley**  
Wellbeing Adviser



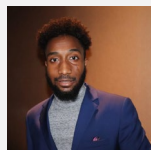
**Louise Cardownie Clare**  
Wellbeing Adviser



**Vacancy**  
Wellbeing Adviser



**Delphine Greene**  
Wellbeing Adviser



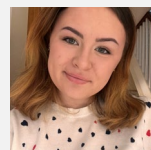
**JD Charles-Hawkins**  
Wellbeing Adviser



**Rosie Passmore**  
Wellbeing Adviser



**Hannah Jelbart**  
Wellbeing Adviser



**Elizabeth Harvey-Hawes**  
Community Wellbeing Co-ordinator